



ROHDE & SCHWARZ
MÜNCHEN

Schaltteillisten
Stromläufe
Bestückungspläne
Parts lists
Circuit diagrams
Components plans

**ROHDE & SCHWARZ**ÄI Datum
Date
56 0287Schaltteilliste für
Parts list for
EE SYNTHESIZER 1
SYNTHESIZER 1Sachnummer
Stock No.
342.5410.01 SABlatt
Page
1

Kennzeichen Component No.	Benennung/Beschreibung Designation	Sachnummer Stock No.	enthalten in contained in
C1	CC 47PF+-2%5X6NPO CAPACITOR VALVO 2222 678 10479	CC 087.6506	
C2	CC 4,7NF+-10%6X9R2000 CAPACITOR VALVO 2222 63051 472	CC 087.7102	
C3	CC 1NF+-10%63V K2000 CERAMIC CAPACITOR VALVO 2222 63051 102	CC 022.0784	
C4	CC 22PF+-2%6X9P100 CAPACITOR VALVO 2222 678 04229	CC 087.6335	
C5	CC 10NF-20+50%7X8R4000 CAPACITOR VALVO 2222 63051 64051103	CC 087.7525	
C6	CE 1,0UF+-20%35V 5X 4X 7 ELECTROLYTIC CAPACITOR ERO-TANTAL TA-ELKOETR1-1/35	CE 022.8185	
C7	CC 220PF+50-20%5R2000 CAPACITOR STETTNER SEFQ 5	022.4838	
C8	CC 470PF-20+50%R2000TRAP. CAPACITOR DRALORIC TEFK 7	CC 083.6776	
C9	CC 2,7PF+-0,25PF3X4NPO CERAMIC CAPACITOR VALVO 2222 678 09278	CC 087.6358	
C10	CC 3,9PF+-0,25PF3X4NPO CAPACITOR VALVO 2222 678 09398	CC 087.6370	
C11	CC 2,2PF+-0,25PF3X4NPO CAPACITOR VALVO 2222 678 09228	CC 087.6341	
C12	CC 3,9PF+-0,25PF3X4NPO CAPACITOR VALVO 2222 678 09398	CC 087.6370	
C13	CC 100NF+-10% 50V5K1200LR CAPACITOR AEROVOX CKR05BX104KLEVELR	CC 092.0777	
C14	CC 100NF+-10% 50V5K1200LR CAPACITOR AEROVOX CKR05BX104KLEVELR	CC 092.0777	
C15	CC 100NF+-10% 50V5K1200LR CAPACITOR AEROVOX CKR05BX104KLEVELR	CC 092.0777	
C16	CC 47 NF+-10% 50V5K1200LR CAPACITOR AEROVOX CKR05EX473KLEVELR	CC 092.0731	
C18	CE 1,0UF+-20%35V 5X 4X 7 ELECTROLYTIC CAPACITOR ERO-TANTAL TA-ELKOETR1-1/35	CE 022.8185	
C19	CE 10 UF+-20%16V 7X 4X 8 ELECTROLYTIC CAPACITOR ERO-TANTAL TA-ELKOETR2-10/15	CE 022.8085	

**ROHDE & SCHWARZ**Äl Datum
Date
56 0287Schaltteilliste für
Parts list for
EE SYNTHESIZER 1
SYNTHESIZER 1Sachnummer
Stock No.
342.5410.01 SABlatt
Page
2

Kennzeichen Component No.	Benennung/Beschreibung Designation	Sachnummer Stock No.	enthalten in contained in
C20	CC 10NF-20+50%7X8R4000 CAPACITOR VALVO 2222 63051 64051103	CC 087.7525	
C21	CC 10NF-20+50%7X8R4000 CAPACITOR VALVO 2222 63051 64051103	CC 087.7525	
C22	CC 10NF-20+50%7X8R4000 CAPACITOR VALVO 2222 63051 64051103	CC 087.7525	
C23	CC 100NF+-10%100V8K1200LR CAPACITOR AEROVOX CKR06BX104KLEVELR	CC 092.0890	
C24	CC 100NF+-10%100V8K1200LR CAPACITOR AEROVOX CKRC6BX104KLEVELR	CC 092.0890	
C25	CC 100PF+-10%50V2NPOCHIP CAPACITOR VITRAMON VJ0805A101KFA	CC 082.2948	
C26	CC 10NF-20+50%7X8R4000 CAPACITOR VALVO 2222 63051 64051103	CC 087.7525	
C27	CC 33PF+-2%4X5NPO CAPACITOR VALVO 2222 678 10339	CC 087.6487	
C28	CC 10PF+-0,25PF3X4NPO CAPACITOR VALVO 2222 678 09109	CC 087.6429	
C29	CC 1NF+-10%63V K2000 CERAMIC CAPACITOR VALVO 2222 63051 102	CC 022.0784	
C30	CC 15PF+-2%3X4NPO CAPACITOR VALVO 2222 678 10159	CC 087.6441	
C31	CC 560PF+-10%3X4R2000 CAPACITOR VALVO 2222 63051 561	CC 087.7002	
C32	CE 10 UF+-20%16V 7X 4X 8 ELECTROLYTIC CAPACITOR ERO-TANTAL TA-ELKOETR2-10/15	CE 022.8085	
C33	CC 1UF +-10% 50VK1200LR CAPACITOR AEROVOX CKR06BX105KLEVELR	CC 092.1015	
C34	CC 1UF +-10% 50VK1200LR CAPACITOR AEROVOX CKR06BX105KLEVELR	CC 092.1015	
C35	CC 2,7PF+-0,25PF3X4NPO CERAMIC CAPACITOR VALVO 2222 678 09278	CC 087.6358	
C39	CC 1,5PF+-0,25PF3X4P100 CAPACITOR VALVO 2222 678 03158	CC 087.6193	
C40	CC 180PF+-10%50C3NPOCHIP CAPACITOR VITRAMON VJ1005A181KFB	CC 082.3138	
C41	CC 180PF+-10%50C3NPOCHIP CAPACITOR VITRAMON VJ1005A181KFB	CC 082.3138	

**ROHDE & SCHWARZ**Äl Datum
Date
56 0287Schaltteilliste für
Parts list for
EE SYNTHESIZER 1
SYNTHESIZER 1Sachnummer
Stock No.
342.5410.01 SABlatt
Page
3

Kennzeichen Component No.	Benennung/Beschreibung Designation	Sachnummer Stock No.	enthalten in contained in
C42	CC 180PF+-10%50C3NPOCHIP CAPACITOR	CC 082.3138	
C43	VITRAMON VJ1005A181KFB CC 180PF+-10%50C3NPOCHIP CAPACITOR	CC 082.3138	
C44	VITRAMON VJ1005A181KFB CC 5,2PF+-0,25PF50V2NPO CAPACITOR	CC 093.5650	
C45	VITRAMON VJ0805A5R2CFA ENTHALTEN IN/INCLUDED IN 342.5426		
C46	DT KONDENS.0,6PF 2,5X2,8 CAPACITOR	093.5772	
C47	CE 1,0UF+-20%35V 5X 4X 7 ELECTROLYTIC CAPACITOR	CE 022.8185	
C48	ERO-TANTAL TA-ELKOETR1-1/35 CC 3,6PF+-0,25PF50V2NPO CAPACITOR	CC 093.5614	
C49	VITRAMON VJ0805A3R6CFA ENTHALTEN IN/INCLUDED IN 342.5426		
C50	CC 100NF+-10% 50V5K1200LR CAPACITOR	CC 092.0777	
C51	AEROVOX CKR05BX104KLEVELR CE 1,0UF+-20%35V 5X 4X 7 ELECTROLYTIC CAPACITOR	CE 022.8185	
C52	ERO-TANTAL TA-ELKOETR1-1/35 CC 1UF +-10% 50VK1200LR CAPACITOR	CC 092.1015	
C53	AEROVOX CKR06BX105KLEVELR CC 1UF +-10% 50VK1200LR CAPACITOR	CC 092.1015	
C56	AEROVOX CKR06EX105KLEVELR CC 1,5PF+-0,25PF50VNPO CH CHIP CAPACITOR	CC 099.6793	
C57	VITRAMON VJ0805A1R5CFA CC 1,5PF+-0,25PF50VNPO CH CHIP CAPACITOR	CC 099.6793	
C58	VITRAMON VJ0805A1R5CFA CC 3,0PF+-0,25PF50V NPO C CERAMIC CHIP CAPACITOR	CC 099.8267	
C59	VITRAMON VJ0805A3R0CFA CC 3,0PF+-0,25PF50V NPO C CERAMIC CHIP CAPACITOR	CC 099.8267	
C60	VITRAMON VJ0805A120JFA CC 12PF+-5%100V NPO VS.C CERAMIC CAPACITOR	CC 022.3948	
C61	VITRAMON VJ0805A120JFA CC 4,7PF+-0,5PF100V3NPO C CAPACITOR	CC 082.2977	
C62	VITRAMON VJ1005A4R7DFB CC 12PF+-5%100V NPO VS.C CERAMIC CAPACITOR	CC 022.3948	
C63	VITRAMON VJ0805A120JFA CC 18PF+-2%3X4NPO CAPACITOR	CC 087.6458	
	VALVO 2222 678 10189		

342.5410.01 SA BL 3+

**ROHDE & SCHWARZ**

Äl	Datum
56	0287

Schaltteilliste für Parts list for EE SYNTHESIZER 1 SYNTHESIZER 1
--

Sachnummer Stock No. 342.5410.01 SA

Blatt Page 4

Kennzeichen Component No.	Benennung/Beschreibung Designation	Sachnummer Stock No.	enthalten in contained in
C64	CC 22PF+-2%4X5NPO CAPACITOR VALVO 2222 678 10229	CC 087.6464	
C65	CC 22PF+-2%4X5NPO CAPACITOR VALVO 2222 678 10229	CC 087.6464	
C66	CC 18PF+-2%3X4NPO CAPACITOR VALVO 2222 678 10229	CC 087.6458	
C67	CC 1NF+-10%100V2K1200CHIP CAPACITOR VITRAMON VJ0805Y102KFA	CC 082.7385	
C68	CC 1NF+-10%63V K2000 CERAMIC CAPACITOR VALVO 2222 63051 102	CC 022.0784	
C69	CE 22 UF+-20%16V 7X 5X11 ELECTROLYTIC CAPACITOR ERO-TANTAL TA-ELKO ETR3-22/15	CE 022.8091	
C70	CC 10PF+-0,25PF3X4NPO CAPACITOR VALVO 2222 678 09109	CC 087.6429	
C71	CC 56PF+-2%5X6NPO CAPACITOR VALVO 2222 678 10569	CC 087.6512	
C72	CC 1NF+-10%63V K2000 CERAMIC CAPACITOR VALVO 2222 63051 102	CC 022.0784	
C73	CE 22 UF+-20%16V 7X 5X11 ELECTROLYTIC CAPACITOR ERO-TANTAL TA-ELKO ETR3-22/15	CE 022.8091	
C74	CC 1NF+-10%63V K2000 CERAMIC CAPACITOR VALVO 2222 63051 102	CC 022.0784	
C75	CC 33PF+-2%4X5NPO CAPACITOR VALVO 2222 678 10339	CC 087.6487	
C76	CE 10 UF+-20%16V 7X 4X 8 ELECTROLYTIC CAPACITOR ERO-TANTAL TA-ELKOETR2-10/15	CE 022.8085	
C77	CC 10NF-20+50%7X8R4000 CAPACITOR VALVO 2222 63051 64051103	CC 087.7525	
C78	CC 1,5PF+-0,25PF3X4P100 CAPACITOR VALVO 2222 678 03158	CC 087.6193	
C79	CC 10PF+-0,25PF3X4NPO CAPACITOR VALVO 2222 678 09109	CC 087.6429	
C80	CC 100PF+-2%6X9NPO CAPACITOR VALVO 2222 678 10101	CC 087.6541	
C81	CE 10 UF+-20%16V 7X 4X 8 ELECTROLYTIC CAPACITOR ERO-TANTAL TA-ELKOETR2-10/15	CE 022.8085	
C82	CC 10NF-20+50%7X8R4000 CAPACITOR VALVO 2222 63051 64051103	CC 087.7525	

**ROHDE & SCHWARZ**

AI	Datum
56	0287

 Schaltteilliste für
 Parts list for
 EE SYNTHESIZER 1
 SYNTHESIZER 1

 Sachnummer
 Stock No.
 342.5410.01 SA

 Blatt
 Page
 5

Kennzeichen Component No.	Benennung/Beschreibung Designation	Sachnummer Stock No.	enthalten in contained in
C83	CC 10PF+-0,25PF3X4NPO CAPACITOR VALVO 2222 678 09109	CC 087.6429	
C84	CC 4,3PF+-0,25PF50V2NPO CAPACITOR VITRAMON VJ0805A4R3CFA	CC 093.5643	
C85	CE 10 UF+-20%16V 7X 4X 8 ELECTROLYTIC CAPACITOR ERO-TANTAL TA-ELKOETR2-10/15	CE 022.8085	
C86	CC 10NF-20+50%7X8R4000 CAPACITOR VALVO 2222 63051 64051103	CC 087.7525	
C87	CC 2,3PF+-0,25PF50V2NPO CAPACITOR VITRAMON VJ0805A2R3CFA	CC 093.5566	
C88	CC 5,2PF+-0,25PF50V2NPO CAPACITOR VITRAMON VJ0805A5R2CFA	CC 093.5650	
C89	CC 100PF+-2%6X9NPO CAPACITOR VALVO 2222 678 10101	CC 087.6541	
C90	CE 10 UF+-20%16V 7X 4X 8 ELECTROLYTIC CAPACITOR ERO-TANTAL TA-ELKOETR2-10/15	CE 022.8085	
C91	CC 10NF-20+50%7X8R4000 CAPACITOR VALVO 2222 63051 64051103	CC 087.7525	
C92	CC 2,9PF+-0,25PF50V2NPO CAPACITOR VITRAMON VJ0805A2R9CFA	CC 093.5589	
C93	CC 2,1PF+-0,25PF50V2NPO CAPACITOR VITRAMON VJ0805A2R1CFA	CC 093.5550	
C100	CC 100NF+-10%100V8K1200LR CAPACITOR AEROVOX CKR06BX104KLEVELR	CC 092.0890	
C101	CC 100NF+-10%100V8K1200LR CAPACITOR AEROVOX CKR06BX104KLEVELR	CC 092.0890	
C104	CC 10NF-20+50%7X8R4000 CAPACITOR VALVO 2222 63051 64051103	CC 087.7525	
C105	CC 100NF+-10%100V8K1200LR CAPACITOR AEROVOX CKR06BX104KLEVELR	CC 092.0890	
C106	CC 10PF+-0,25PF3X4NPO CAPACITOR VALVO 2222 678 09109	CC 087.6429	
C107	CC 1NF+-10%63V K2000 CERAMIC CAPACITOR VALVO 2222 63051 102	CC 022.0784	
C108	CC 100NF+-10%100V8K1200LR CAPACITOR AEROVOX CKR06BX104KLEVELR	CC 092.0890	
C109	CC 100NF+-10%100V8K1200LR CAPACITOR AEROVOX CKR06BX104KLEVELR	CC 092.0890	



ROHDE & SCHWARZ

Äl Datum
Date
56 0287

Schaltteilliste für
Parts list for
EE SYNTHESIZER 1
SYNTHESIZER 1

Sachnummer
Stock No.
342.5410.01 SA

Blatt
Page
6

Kennzeichen Component No.	Benennung/Beschreibung Designation	Sachnummer Stock No.	enthalten in contained in
C110	CC 100NF+-10%100V8K1200LR CAPACITOR	CC 092.0890	
C111	AEROVOX CKR06BX104KLEVELR CE 1,0UF+-20%35V 5X 4X 7 ELECTROLYTIC CAPACITOR	CE 022.8185	
C113	ERO-TANTAL TA-ELKOETR1-1/35 CE 10 UF+-20%16V 7X 4X 8 ELECTROLYTIC CAPACITOR	CE 022.8085	
C114	ERO-TANTAL TA-ELKOETR2-10/15 CC 68NF+-10%50V5K1200VIEL CAPACITOR	CC 082.7827	
C115	UNION CARB CK05BX683K CC 10NF-20+50%7X8R4000 CAPACITOR	CC 087.7525	
C116	VALVO 2222 63051 64051103 CC 10NF-20+50%7X8R4000 CAPACITOR	CC 087.7525	
C117	VALVO 2222 63051 64051103 CC 10NF-20+50%7X8R4000 CAPACITOR	CC 087.7525	
C118	VALVO 2222 63051 64051103 CC 1UF +-10% 50VK1200LR CAPACITOR	CC 092.1015	
C119	AEROVOX CKR06BX105KLEVELR CC 1UF +-10% 50VK1200LR CAPACITOR	CC 092.1015	
C120	AEROVOX CKR06BX105KLEVELR CC 1,5PF+-0,2PF63V3X3P100 CAPACITOR	093.5795	
C121	DRALORIC EEFZ3X3 63V 1,5PF CC 1,5PF+-0,25PF3X4P100 CAPACITOR	CC 087.6193	
C123	VALVO 2222 678 03158 CE 1,0UF+-20%35V 5X 4X 7 ELECTROLYTIC CAPACITOR	CE 022.8185	
C124	ERO-TANTAL TA-ELKOETR1-1/35 CC 3,8PF+-0,25PF50V2NPO CAPACITOR	CC 093.5620	
C125	VITRAMON VJ0205A3R8CFA DT KONDENS.0,6PF 2,5X2,8 CAPACITOR	093.5772	
C127	CE 1,0UF+-20%35V 5X 4X 7 ELECTROLYTIC CAPACITOR	CE 022.8185	
C128	ERO-TANTAL TA-ELKOETR1-1/35 CC 1UF +-10% 50VK1200LR CAPACITOR	CC 092.1015	
C129	AEROVOX CKR06BX105KLEVELR CC 1UF +-10% 50VK1200LR CAPACITOR	CC 092.1015	
C150	AEROVOX CKR06BX105KLEVELR CC 15PF+-2%3X4NPO CAPACITOR	CC 087.6441	
C152	VALVO 2222 678 10159 CC 560PF+-10%3X4R2000 CAPACITOR	CC 087.7002	
	VALVO 2222 63051 561		

uns alle Rechte vor



ROHDE & SCHWARZ

AI Datum
Date
56 0287

Schaltteilliste für
Parts list for
EE SYNTHESIZER 1
SYNTHESIZER 1

Sachnummer
Stock No.

342.5410.01 SA

Blatt
Page

7

Kennzeichen Component No.	Benennung/Beschreibung Designation	Sachnummer Stock No.	enthalten in contained in
C153	CE 10 UF+-20%16V 7X 4X 8 ELECTROLYTIC CAPACITOR	CE 022.8085	
C154	ERO-TANTAL TA-ELKGETR2-10/15 CC 2,7PF+-0,25PF3X4NPO CERAMIC CAPACITOR	CC 087.6358	
C160	VALVO 2222 678 09278 CC 1,8PF+-0,25PF3X4P100 CAPACITOR	CC 087.6206	
C161	VALVO 2222 678 03188 CC 10PF+-0,25PF3X4NPO CAPACITOR	CC 087.6429	
C162	VALVO 2222 678 09109 CC 56PF+-2%5X6NPO CAPACITOR	CC 087.6512	
C165	VALVO 2222 678 10569 CC 56PF+-2%5X6NPO CAPACITOR	CC 087.6512	
C166	VALVO 2222 678 10569 CC 56PF+-2%5X6NPO CAPACITOR	CC 087.6512	
C167	VALVO 2222 678 10569 CC 47PF+-2%5X6NPO CAPACITOR	CC 087.6506	
C168	VALVO 2222 678 10479 CC 1 NF+- 5X100V NPO VIEL CERAMIC CAPACITOR	CC 060.0894	
C170	ERIE 8133-100-COG-1NF-0 CC 3,3PF+-0,25PF50V NPO CERAMIC CHIP CAPACITOR	CC 099.8273	
C171	VITRAMON VJ0805A3R3CFA CC 2,1PF+-0,25PF50V2NPO CAPACITOR	CC 093.5550	
C172	VITRAMON VJ0805A2R1CFA CC 3,3PF+-0,25PF50V NPO CERAMIC CHIP CAPACITOR	CC 099.8273	
C173	VITRAMON VJ0805A3R3CFA CC 3PF+-0,25PF5NPO CAPACITOR	022.4615	
C174	DRALORIC SE5,3/0,25 NPO CC 3PF+-0,25PF5NPO CAPACITOR	022.4615	
C175	DRALORIC SE5,3/0,25 NPO CC 220PF+-10%63V3X5D2000 CAPACITOR	CC 099.5616	
C176	VALVO 2222 63051 221 CC 2,3PF+-0,25PF50V2NPO CAPACITOR	CC 093.5566	
C177	VITRAMON VJ0805A2R3CFA CC 1,0PF+-0,25PF50VNPO CH CHIP CAPACITOR	CC 099.6770	
C178	VITRAMON VJ0805A1R0CFA DT KONDENS.0,6PF 2,5X2,8 CAPACITOR	093.5772	
C179	DT KONDENS.0,6PF 2,5X2,8 CAPACITOR	093.5772	

342.5410.01 SA 5L 7+

Für diese Unterlage behalten wir
uns alle Rechte vor



ROHDE & SCHWARZ

Äl

Datum
Date

Schaltteilliste für
Parts list for
EE SYNTHESIZER 1
SYNTHESIZER 1

Sachnummer
Stock No.

Blatt
Page

56 0287

342.5410.01 SA

8

Kennzeichen Component No.	Benennung/Beschreibung Designation	Sachnummer Stock No.	enthalten in contained in
C180	CC 10NF-20+50%7X8R4000 CAPACITOR VALVO 2222 63051 64051103	CC 087.7525	
C181	CC 47PF+-2%5X6NPG CAPACITOR VALVO 2222 678 10479	CC 087.6506	
C192	CC 100PF+-5%50V NPO 1206 CERAMIC CHIP CAPACITOR VITRAMON VJ1206A101JFA	CC 099.8415	
C193	CK 1UF+-10%50V5RM MKT CAPACITOR WIMA MKS2/50/1UF/10%	CK 099.2998	
C194	CK 1UF+-10%50V5RM MKT CAPACITOR WIMA MKS2/50/1UF/10%	CK 099.2998	
C195	CC 100PF+-10%50V2NPOCHIP CAPACITOR VITRAMON VJ0805A101KFA	CC 082.2948	
C196	CC 100PF+-5%50V NPO 1206 CERAMIC CHIP CAPACITOR VITRAMON VJ1206A101JFA	CC 099.8415	
C197	CC 10NF-20+50%7X8R4000 CAPACITOR VALVO 2222 63051 64051103	CC 087.7525	
C198	CC 100PF+-2%4X5N750 CAPACITOR VALVO 2222 678 58101	CC 087.6906	
C199	CE 100UF-10+50% 16V 9X13 ELECTROLYTIC CAPACITOR ROEDERST EK 00CB 310 D	CE 006.7165	
C200	CC 10NF-20+50%7X8R4000 CAPACITOR VALVO 2222 63051 64051103	CC 087.7525	
BIS/TO C220			
C221	CE 47UF-10+50% 40V 9X13 ELECTROLYTIC CAPACITOR ROEDERST EK 00 CE 247 G	CE 006.7142	
C222	CC 10NF-20+50%7X8R4000 CAPACITOR VALVO 2222 63051 64051103	CC 087.7525	
C223	CE 100UF-10+50% 16V 9X13 ELECTROLYTIC CAPACITOR ROEDERST EK 00CB 310 D	CE 006.7165	
C224	CC 10NF-20+50%7X8R4000 CAPACITOR VALVO 2222 63051 64051103	CC 087.7525	
C225	CE 100UF-10+50% 16V 9X13 ELECTROLYTIC CAPACITOR ROEDERST EK 00CB 310 D	CE 006.7165	
C226	CC 10NF-20+50%7X8R4000 CAPACITOR VALVO 2222 63051 64051103	CC 087.7525	
C227	CE 100UF-10+50% 16V 9X13 ELECTROLYTIC CAPACITOR ROEDERST EK 00CB 310 D	CE 006.7165	

una alle Rechte vor

**ROHDE & SCHWARZ**AI Datum
Date
56 0287Schaltteilliste für
Parts list for
EE SYNTHESIZER 1
SYNTHESIZER 1Sachnummer
Stock No.
342.5410.01 SABlatt
Page
9

Kennzeichen Component No.	Benennung/Beschreibung Designation	Sachnummer Stock No.	enthalten in contained in
C228	CC 10NF-20+50%7X8R4000 CAPACITOR VALVO 2222 63051 64051103	CC 087.7525	
C229	CE 100UF-10+50% 16V 9X13 ELECTROLYTIC CAPACITOR ROEDERST EK 00CB 310 D	CE 006.7165	
C230	CC 10NF-20+50%7X8R4000 CAPACITOR VALVO 2222 63051 64051103	CC 087.7525	
BIS/TO C235 C236	CC 82PF+-2%6X7NPO CAPACITOR VALVO 2222 678 10829	CC 087.6535	
C237	CC 10NF-20+50%7X8R4000 CAPACITOR VALVO 2222 63051 64051103	CC 087.7525	
BIS/TO C243 C244	CC 47PF+-2%5X6NPO CAPACITOR VALVO 2222 678 10479	CC 087.6506	
C245	CC 10NF-20+50%7X8R4000 CAPACITOR VALVO 2222 63051 64051103	CC 087.7525	
C246	CC 47PF+-2%5X6NPO CAPACITOR VALVO 2222 678 10479	CC 087.6506	
C247	CC 47PF+-2%5X6NPO CAPACITOR VALVO 2222 678 10479	CC 087.6506	
C248	CC 47PF+-2%5X6NPO CAPACITOR VALVO 2222 678 10479	CC 087.6506	
C249	CC 10NF-20+50%7X8R4000 CAPACITOR VALVO 2222 63051 64051103	CC 087.7525	
C250	CC 10PF+-0,25PF3X4NPO CAPACITOR VALVO 2222 678 09109	CC 087.6429	
C251	CC 10PF+-0,25PF3X4NPO CAPACITOR VALVO 2222 678 09109	CC 087.6429	
C252	CC 10NF-20+50%7X8R4000 CAPACITOR VALVO 2222 63051 64051103	CC 087.7525	
C254	CC 10NF-20+50%7X8R4000 CAPACITOR VALVO 2222 63051 64051103	CC 087.7525	
C256	CC 47PF+-2%5X6NPO CAPACITOR VALVO 2222 678 10479	CC 087.6506	
C257	CC 120PF+-2%6X9NPO CAPACITOR VALVO 2222 678 10121	CC 087.6558	

342.5410.01 SA BL 9+



ROHDE & SCHWARZ

Äl Datum
Date
56 0287

Schaltteilliste für
Parts list for
EE SYNTHESIZER 1
SYNTHESIZER 1

Sachnummer
Stock No.
342.5410.01 SA

Blatt
Page
10

Kennzeichen Component No.	Benennung/Beschreibung Designation	Sachnummer Stock No.	enthalten in contained in
C258	CC 47PF+-2%5X6NPC CAPACITOR VALVO 2222 678 10479	CC 087.6506	
C259	CC 10NF-20+50%7X8R4000 CAPACITOR VALVO 2222 63051 64051103	CC 087.7525	
C260	CC 10NF-20+50%7X8R4000 CAPACITOR VALVO 2222 63051 64051103	CC 087.7525	
C270	CC 10NF-20+50%7X8R4000 CAPACITOR VALVO 2222 63051 64051103	CC 087.7525	
C271	CC 10NF-20+50%7X8R4000 CAPACITOR VALVO 2222 63051 64051103	CC 087.7525	
C272	CC 10NF-20+50%7X8R4000 CAPACITOR VALVO 2222 63051 64051103	CC 087.7525	
C282	CC 47PF+-2%5X6NPC CAPACITOR VALVO 2222 678 10479	CC 087.6506	
BIS/TO C286 C400 BIS/TO C403	ENTHALTEN IN/INCLUDED IN 342.5426		
C404	DT KONDENS.0,6PF 2,5X2,8 CAPACITOR	093.5772	
C405	ENTHALTEN IN/INCLUDED IN 342.5426		
C406	ENTHALTEN IN/INCLUDED IN 342.5426		
C407	ENTHALTEN IN/INCLUDED IN 342.5426		
C408	DT KONDENS.0,6PF 2,5X2,8 CAPACITOR	093.5772	
C409	ENTHALTEN IN/INCLUDED IN 342.5426		
C410	ENTHALTEN IN/INCLUDED IN 342.5426		
C411	CC 1,0PF+-0,1PF500V3X3X3P CAPACITOR ATC ATC 100 B1R0B-P50DX	CC 580.9579	
L1	LD 0,10UH10%0,08OHM1,400A CHOKE DELEVAN DROSSEL1025-94	LD 067.2740	
L2	LD 1,00UH10%1,00OHM0,390A CHOKE DELEVAN 1025-20	LD 067.2863	
L3	LD SPULE COIL	342.5455	342.4988
L4	LD SPULE COIL	342.9938	342.4988

**ROHDE & SCHWARZ**ÄI Datum
Date
56 0287Schaltteilliste für
Parts list for
EE SYNTHESIZER 1
SYNTHESIZER 1Sachnummer
Stock No.
342.5410.01 SABlatt
Page
11

Kennzeichen Component No.	Benennung/Beschreibung Designation	Sachnummer Stock No.	enthalten in contained in
L5	LD SPULE COIL	342.5449	342.4988
L6	LD SPULE COIL	342.5449	342.4988
L7	LD 1000UH10X72,00HMG,028A CHOKE	LD 037.8005	
L8	DELEVAN DROSSEL1025-92 LD 1,00UH10X1,000HMG,390A CHOKE	LD 067.2863	
L9	DELEVAN 1025-20 LD 0,10 UH 10% 935 MIA CHOKE	LD 092.3030	
L10	DELEVAN DROSSEL0819-00 LD 0,10 UH 10% 935 MIA CHOKE	LD 092.3030	
L11	DELEVAN DROSSEL0819-00 LD 100 UH10X8,000HMG,084A CHOKE	LD 067.3101	
L12	DELEVAN DROSSEL1025-68 LF ROHRK.RD3,5X1,2X3 GETR TUPLAR CORE	LF 026.9257	
L15	LD 10,0UH10X3,300HMG,144A CHOKE	LD 026.4184	
L20	DELEVAN DROSSEL1025-44 LD SPULE COIL	342.9680	342.4988
L21	LD SPULE COIL	342.9680	342.4988
L22	LD SPULE COIL	342.5478	342.4988
L23	LD SPULE COIL	342.9680	342.4988
L24	LD SPULE COIL	342.9680	342.4988
L25	LD SPULE COIL	342.5478	342.4988
L26	LD SPULE COIL	342.5478	342.4988
L27	LD SPULE COIL	342.5478	342.4988
L30	LD SPULE COIL	342.5449	342.4988
L31	LD SPULE COIL	342.5449	342.4988
L32	LD 0,03UH/85PF 6100 COIL WITH ALU-CORE TOCO 301-AS-0100	343.0128	
L33	LD 0,064UH/33,7PF 685 CHOKE TOCO 301 AS-0300,	303.9030	
L34	LD 0,064UH/33,7PF 685 CHOKE TOCO 301 AS-0300,	303.9030	
L35	LD 0,064UH/33,7PF 685 CHOKE TOCO 301 AS-0300,	303.9030	

342.5410.01 SA 6L11+

Für diese Unterlage behalten wir
uns alle Rechte vor

**ROHDE & SCHWARZ**

AI

Datum
DateSchaltteilliste für
Parts list for
EE SYNTHESIZER 1
SYNTHESIZER 1Sachnummer
Stock No.Blatt
Page

56 0287

342.5410.01 SA

12

Kennzeichen Component No.	Benennung/Beschreibung Designation	Sachnummer Stock No.	enthalten in contained in
L36	LD 0,03UH/85PF 6100 COIL WITH ALU-CORE TOCO 301-AS-0100	343.0128	
L37	LD 0,10UH10%,080HM1,400A CHOKE DELEVAN DROSSEL1025-94	LD 067.2740	
L38	LD 0,10UH10%,080HM1,400A CHOKE DELEVAN DROSSEL1025-94	LD 067.2740	
L39	LD 0,10UH10%,080HM1,400A CHOKE DELEVAN DROSSEL1025-94	LD 067.2740	
L40	LD 0,10UH10%,080HM1,400A CHOKE DELEVAN DROSSEL1025-94	LD 067.2740	
L41	LD 0,10UH10%,080HM1,400A CHOKE DELEVAN DROSSEL1025-94	LD 067.2740	
L42	LD SPULE	343.0463	342.4988
L43	LD SPULE COIL	343.0470	342.4988
L44	LD 0,10UH10%,080HM1,400A CHOKE DELEVAN DROSSEL1025-94	LD 067.2740	
L45	LD SPULE COIL	342.9844	342.4988
L46	LD SPULE COIL	342.9844	342.4988
L47	LD SPULE COIL	342.9838	342.4988
L49	LD SPULE COIL	343.0470	342.4988
L50	LD 1000UH10%72,00HMO,028A CHOKE DELEVAN DROSSEL1025-92	LD 037.8005	
L51	LD 0,15UH10%,100HM1,230A CHOKE DELEVAN DROSSEL1025-00	LD 067.2763	
L52	LD 100 UH10%,000HM0,084A CHOKE DELEVAN DROSSEL1025-68	LD 067.3101	
L53	LD 1000UH10%72,00HMO,028A CHOKE DELEVAN DROSSEL1025-92	LD 037.8005	
L54	LD 1000UH10%72,00HMO,028A CHOKE DELEVAN DROSSEL1025-92	LD 037.8005	
L55	LD 100 UH10%,000HM0,084A CHOKE DELEVAN DROSSEL1025-68	LD 067.3101	
L60	LD SPULE COIL	342.5432	342.4988
L61	LD SPULE COIL	342.5432	342.4988
L62	LD SPULE COIL	342.5478	342.4988

**ROHDE & SCHWARZ**ÄI Datum
Date
56 0287Schaltteilliste für
Parts list for
EE SYNTHESIZER 1
SYNTHESIZER 1Sachnummer
Stock No.
342.5410.01 SABlatt
Page
13

Kennzeichen Component No.	Benennung/Beschreibung Designation	Sachnummer Stock No.	enthalten in contained in
L63	LD SPULE COIL	342.5432	342.4988
L64	LD SPULE COIL	342.5432	342.4988
L65	LD SPULE COIL	342.5478	342.4988
L66	LD SPULE COIL	342.5478	342.4988
L67	LD SPULE COIL	342.5478	342.4988
L96	LD 1,00UH10%1,000HM0,390A CHOKE DELEVAN 1025-20	LD 067.2863	
L97	LD 1,00UH10%1,000HM0,390A CHOKE DELEVAN 1025-20	LD 067.2863	
L98	LD 1,00UH10%1,000HM0,390A CHOKE DELEVAN 1025-20	LD 067.2863	
L99	LD 10,00UH10%3,300HM0,144A CHOKE DELEVAN DROSSEL1025-44	LD 026.4184	
BIS/TO L104 L105	LD 5,60UH10%1,800HM0,195A CHOKE DELEVAN DROSSEL1025-38	LD 067.2957	
BIS/TO L113 L114	LD 5,6 UH 10% 138 MIA CHOKE DELEVAN DROSSEL0819-42	LD 092.3247	
L115	LD 5,60UH10%1,800HM0,195A CHOKE DELEVAN DROSSEL1025-38	LD 067.2957	
L116	LD 5,60UH10%1,800HM0,195A CHOKE DELEVAN DROSSEL1025-38	LD 067.2957	
L117	LD 5,6 UH 10% 138 MIA CHOKE DELEVAN DROSSEL0819-42	LD 092.3247	
L118	LD 5,60UH10%1,800HM0,195A CHOKE DELEVAN DROSSEL1025-38	LD 067.2957	
L119	LD 1,20UH10%0,180HM0,620A CHOKE DELEVAN DROSSEL1025-22	LD 067.2870	
L120	LD 100 UH10%8,000HM0,084A CHOKE DELEVAN DROSSEL1025-68	LD 067.3101	
L121	LD 6,80UH10%2,000HM0,185A CHOKE DELEVAN DROSSEL1025-40	LD 026.4178	
L122	LD 5,60UH10%1,800HM0,195A CHOKE DELEVAN DROSSEL1025-38	LD 067.2957	

342.5410.01 SA BL13+

Für diese Unterlage behalten wir
uns alle Rechte vor

**ROHDE & SCHWARZ**Äl Datum
Date
56 0287Schaltteilliste für
Parts list for
EE SYNTHESIZER 1
SYNTHESIZER 1Sachnummer
Stock No.
342.5410.01 SABlatt
Page
14

Kennzeichen Component No.	Benennung/Beschreibung Designation	Sachnummer Stock No.	enthalten in contained in
L125	LD 6,80UH10%2,00OHMO,185A CHOKE DELEVAN DROSSEL1025-40	LD 026.4178	
L126	LD 6,80UH10%2,00OHMO,185A CHOKE DELEVAN DROSSEL1025-40	LD 026.4178	
L127	LD 4,70UH10%1,20OHMO,239A CHOKE DELEVAN DROSSEL1025-36	LD 067.2940	
L129	LD 0,10UH10%0,08OHM1,400A CHOKE DELEVAN DROSSEL1025-94	LD 067.2740	
L140	LD 1,00UH10%1,00OHMO,390A CHOKE DELEVAN 1025-20	LD 067.2863	
L141	LD 1,00UH10%1,00OHMO,390A CHOKE DELEVAN 1025-20	LD 067.2863	
L142	LD 1,00UH10%1,00OHMO,390A CHOKE DELEVAN 1025-20	LD 067.2863	
L143	LD 1,00UH10%1,00OHMO,390A CHOKE DELEVAN 1025-20	LD 067.2863	
L144	LD 100 UH10%8,00OHMO,084A CHOKE DELEVAN DROSSEL1025-68	LD 067.3101	
L145	LD 100 UH10%8,00OHMO,084A CHOKE DELEVAN DROSSEL1025-68	LD 067.3101	
L160	LL SPULE COIL	342.9850	342.4988
L161	LL SPULE COIL	342.9850	342.4988
L162	LD SPULE COIL	342.9867	342.4988
L400	ENTHALTEN IN/INCLUDED IN 342.5410		
N1	BM TFM2 MIXER 1.0GHZ MIXER MCL TFM-2	BM 302.6080	
N2	BM TFM2 MIXER 1.0GHZ MIXER MCL TFM-2	BM 302.6080	
N3	BO LM311H COMPAR COMPARATOR RAYTHEON LM311H	234.4469	
N4	BO LF155J PIFET OPAMP OPERATIONAL AMPLIFIER MOTOROLA LF155J	BO 343.1518	
N5	BM HPF505S MIXER 0.5GHZ MIXER MCL HPF505	BM 303.2928	
N6	BO SE5534AFE LOW N.OPAMP OPERATIONAL AMPLIFIER SIGNETICS SE5534AFE	301.3335	

**ROHDE & SCHWARZ**ÄI Datum
Date
56 0287Schaltteilliste für
Parts list for
EE SYNTHESIZER 1
SYNTHESIZER 1Sachnummer
Stock No.
342.5410.01 SABlatt
Page
15

Kennzeichen Component No.	Benennung/Beschreibung Designation	Sachnummer Stock No.	enthalten in contained in
N7	EO SE5534AFE LOW N.OPAMP OPERATIONAL AMPLIFIER SIGNETICS SE5534AFE	301.3335	
N8	BL CD4515BD 1-CF-16 DEC DECODER RCA CD4515BD	BL 517.7620	
N9	BL MC14560BAL NBCD-ADDER NBCD ADDER MOTOROLA MC14560BAL	BL 303.9547	
N10	BO LM308N PREC. OPAMP OPERATIONAL AMPLIFIER MOTOROLA LM308N	BO 247.7510	
N11	BO LF412CN 2XFET OPAMP OPERATIONAL AMPLIFIER NSC LF412CN	356.0521	
P1	VL WIRE-WRAP PIN WIRE-WRAP PIN BERG NR. 75 403-001	VL 088.4507	
P2	VL WIRE-WRAP PIN WIRE-WRAP PIN BERG NR. 75 403-001	VL 088.4507	
R1	RL 0,21W 56,2 OHM+-1%TK50 RESISTOR	RL 092.1280	
R2	RESISTA MK1 56,2OHM 1% TK50 RL 0,21W 2,74KOHM+-1%TK50 RESISTOR	RL 092.1496	
R3	RESISTA MK1 2K74 1% TK50 RL 0,21W 1,21KOHM+-1%TK50 RESISTOR	RL 092.1450	
R4	RESISTA MK1 1K21 1% TK50 RL 0,35W 121 OHM+-1%TK50 RESISTOR	RL 082.9859	
R5	DRALORIC SMA0207/121OHM-F-D RL 0,35W 100 OHM+-1%TK50 METALFILM-RESISTOR	RL 082.6543	
R6	DRALORIC SMA0207/100/HM-F-D RL 0,21W 150 OHM2% UNGEW. RESISTOR	RL 092.5979	
R7	RESISTA MK1 150OHM 2% UNGEW. RL 0,21W 47 OHM2% UNGEW. RESISTOR	RL 092.5910	
R8	RESISTA MK1 470HM 2% UNGEW. RL 0,35W 47,5KOHM+-1%TK50 RESISTOR	RL 083.1800	
R9	DRALORIC SMA/207/47,5K-F-C RL 0,35W 5,62KOHM+-1%TK50 RESISTOR	RL 082.2190	
R10	DRALORIC SMA0207/5,62K-F-C RL 0,35W 12,1KOHM+-1%TK50 RESISTOR	RL 083.1351	
R11	DRALORIC SMA0207/12,1K-F-D RL 0,35W 1,82KOHM+-1%TK50 RESISTOR DRALORIC SMA0207/1,82K-F-C	RL 082.2277	

342.5410.01 SA BL15+

Für diese Unterlage behalten wir
uns alle Rechte vor

**ROHDE & SCHWARZ**

Äl	Datum
56	0287

 Schalteilliste für
 Parts list for
 EE SYNTHESIZER 1
 SYNTHESIZER 1

 Sachnummer
 Stock No.
 342.5410.01 SA

 Blatt
 Page
 16

Kennzeichen Component No.	Benennung/Beschreibung Designation	Sachnummer Stock No.	enthalten in contained in
R12	RL 0,35W 10,0KOHM+-1%TK50 RESISTOR DRALORIC SMA0207/10K-F-D	RL 083.1297	
R13	RL 0,35W 475 OHM+-1%TK50 RESISTOR DRALORIC SMA0207/475OHM-F-D	RL 083.0390	
R14	RL 0,35W 332 OHM+-1%TK50 RESISTOR DRALORIC SMA0207/332OHM-F-D	RL 083.0255	
R15	RL 0,35W 27,4KOHM+-1%TK50 RESISTOR DRALORIC SMA 0207/27,4K-F-C	RL 082.2583	
R16	RL 0,21W 10,0 OHM+-1%TK50 RESISTOR RESISTA MY1 10,0OHM 1% TK50	RL 092.1715	
R17	RL 0,35W 2,67KOHM+-1%TK50 RESISTOR DRALORIC SMA0207/2,67K-F-D	RL 083.0910	
R19	RL 0,35W 10,0KOHM+-1%TK50 RESISTOR DRALORIC SMA0207/10K-F-D	RL 083.1297	
R20	RL 0,35W 221 OHM+-1%TK50 RESISTOR DRALORIC SMA0207/221OHM-F-D	RL 083.0084	
R21	RL 0,35W 10,0KOHM+-1%TK50 RESISTOR DRALORIC SMA0207/10K-F-D	RL 083.1297	
R22	RL 0-WIDERSTAND DIN 0204 0-OHM RESISTOR DRALORIC OMA 0204	RL 069.0000	
R23	RL 0,35W 39,2 OHM+-1%TK50 RESISTOR DRALORIC SMA0207/39,2OHM-F-D	RL 082.9420	
R24	RL 0,35W 33,2KOHM+-1%TK50 RESISTOR DRALORIC SMA0207/33,2K-F-C	RL 083.1674	
R25	RL 0,35W 100 OHM+-1%TK50 METALFILM-RESISTOR DRALORIC SMA0207/100/HM-F-D	RL 082.6543	
R26	RL 0,35W 5,62KOHM+-1%TK50 RESISTOR DRALORIC SMA0207/5,62K-F-C	RL 082.2190	
R27	RL 0,35W 1KOHM+-1%TK50 RESISTOR DRALORIC SMA0207/1K-F-C	RL 082.2160	
R28	RL 0,35W 56,2KOHM+-1%TK50 RESISTOR DRALORIC SMA0207/56,2K-F-C	RL 082.2231	
R29	RL 0,35W 475 OHM+-1%TK50 RESISTOR DRALORIC SMA0207/475OHM-F-D	RL 083.0390	
R30	RL 0,35W 10,0KOHM+-1%TK50 RESISTOR DRALORIC SMA0207/10K-F-D	RL 083.1297	



ROHDE & SCHWARZ

Äl Datum Date
56 0287

Schaltteilliste für
Parts list for
EF SYNTHESIZER 1
SYNTHESIZER 1

Sachnummer
Stock No.
342.5410.01 SA

Blatt
Page
17

Kennzeichen Component No.	Benennung/Beschreibung Designation	Sachnummer Stock No.	enthalten in contained in
R31	RL 0,35W 1KOHM+-1%TK50 RESISTOR DRALORIC SMA0207/1K-F-C	RL 082.2160	
R32	RL 0,35W 301 OHM+-1%TK50 RESISTOR DRALORIC SMA0207/301OHM-F-D	RL 083.0210	
R33	RL 0,35W 47,5KOHM+-1%TK50 RESISTOR DRALORIC SMA/207/47,5K-F-C	RL 083.1800	
R34	RL 0,35W 33,2KOHM+-1%TK50 RESISTOR DRALORIC SMA0207/33,2K-F-C	RL 083.1674	
R35	RL 0,21W 10,0KOHM+-1%TK50 RESISTOR RESISTA MK1 10K0 1% TK50	RL 092.1567	
R36	RL 0,35W 475 OHM+-1%TK50 RESISTOR DRALORIC SMA0207/475OHM-F-D	RL 083.0390	
R37	RL 0,35W 100KOHM+-1%TK50 RESISTOR DRALORIC SMA0207/100K-F-C	RL 082.1764	
R38	RL 0,21W 56 OHM2% UNGEW. RESISTOR RESISTA MK1 56OHM 2% UNGEW.	RL 092.5927	
R39	RL 0,21W 100 OHM2% UNGEW. RESISTOR RESISTA MK1 100OHM 2% UNGEW.	RL 092.5956	
R40	RL 0,35W 68,1 OHM+-1%TK50 RESISTOR DRALORIC SMA0207/68,1OHM-F-D	RL 082.9636	
R41	RL 0,21W 56,2 OHM+-1%TK50 RESISTOR RESISTA MK1 56,2OHM 1% TK50	RL 092.1280	
R42	RL 0,21W 150 OHM2% UNGEW. RESISTOR RESISTA MK1 150OHM 2% UNGEW.	RL 092.5979	
R43	RL 0,21W 47,5 OHM+-1%TK50 RESISTOR RESISTA MK1 47,5OHM 1% TK50	RL 092.1267	
R44	RL 0,35W 1KOHM+-1%TK50 RESISTOR DRALORIC SMA0207/1K-F-C	RL 082.2160	
R45	RL 0,21W 47,5 OHM+-1%TK50 RESISTOR RESISTA MK1 47,5OHM 1% TK50	RL 092.1267	
R46	RL 0,35W 2,74KOHM+-1%TK50 RESISTOR DRALORIC SMA0207/2,74K-F-D	RL 083.0926	
R47	RL 0,21W 10,0KOHM+-1%TK50 RESISTOR RESISTA MK1 10K0 1% TK50	RL 092.1567	
R48	RL 0,21W 24,3 OHM+-1%TK50 RESISTOR RESISTA MK1	092.0054	
R49	RL 0,35W 10,0KOHM+-1%TK50 RESISTOR DRALORIC SMA0207/10K-F-D	RL 083.1297	

342.5410.01 SA BL17+

Für diese Unterlage behalten wir
uns alle Rechte vor



ROHDE & SCHWARZ

Äl Datum
Date
56 0287

Schaltteilliste für
Parts list for
EE SYNTHESIZER 1
SYNTHESIZER 1

Sachnummer
Stock No.
342.5410-01 SA

Blatt
Page
18

Kennzeichen Component No.	Benennung/Beschreibung Designation	Sachnummer Stock No.	enthalten in contained in
R50	RL 0,21W 1,00KOHM+-1%TK50 RESISTOR RESISTA MK1 1K00 1% TK50	RL 092.1444	
R51	RL 0,21W 47,5 OHM+-1%TK50 RESISTOR RESISTA MK1 47,50HM 1% TK50	RL 092.1267	
R52	RL 0,21W 10,0KOHM+-1%TK50 RESISTOR RESISTA MK1 10K0 1% TK50	RL 092.1567	
R53	RL 0,21W 2,74KOHM+-1%TK50 RESISTOR RESISTA MK1 2K74 1% TK50	RL 092.1496	
R54	RL 0,21W 33,2 OHM+-1%TK50 RESISTOR RESISTA MK1 33,20HM 1% TK50	RL 092.1244	
R55	RL 0,35W 1KOHM+-1%TK50 RESISTOR DRALORIC SMA0207/1K-F-C	RL 082.2160	
R56	RL 0,35W 1KOHM+-1%TK50 RESISTOR DRALORIC SMA0207/1K-F-C	RL 082.2160	
R57	RL 0,35W 10,0KOHM+-1%TK50 RESISTOR DRALORIC SMA0207/10K-F-D	RL 083.1297	
R58	RL 0,21W 47,5 OHM+-1%TK50 RESISTOR RESISTA MK1 47,50HM 1% TK50	RL 092.1267	
R59	RL 0,35W 2,21KOHM+-1%TK50 RESISTOR DRALORIC SMA 0207/2,21K-F-C	RL 082.2477	
R60	RL 0,35W 2,21KOHM+-1%TK50 RESISTOR DRALORIC SMA 0207/2,21K-F-C	RL 082.2477	
R61	RL 0,21W 1,0KOHM2% UNGEW. RESISTOR RESISTA MK1 1K 2% UNGEW.	RL 092.6075	
R62	RL 0,21W 1,0KOHM2% UNGEW. RESISTOR RESISTA MK1 1K 2% UNGEW.	RL 092.6075	
R63	RL 0,21W 1,0KOHM2% UNGEW. RESISTOR RESISTA MK1 1K 2% UNGEW.	RL 092.6075	
R64	RL 0,21W 1,0KOHM2% UNGEW. RESISTOR RESISTA MK1 1K 2% UNGEW.	RL 092.6075	
R65	RL 0,21W 100 KOHM+-1%TK50 RESISTOR RESISTA MK1 100K 10% TK50	RL 092.1680	
R66	RL 0,21W 100 KOHM+-1%TK50 RESISTOR RESISTA MK1 100K 10% TK50	RL 092.1680	
R67	RL 0,35W 2,74KOHM+-1%TK50 RESISTOR DRALORIC SMA0207/2,74K-F-D	RL 083.0926	
R71	RL 0,35W 2,74KOHM+-1%TK50 RESISTOR DRALORIC SMA0207/2,74K-F-D	RL 083.0926	

uns alle Rechte vor



ROHDE & SCHWARZ

Äl Datum
Date
56 0287

Schaltteilliste für
Parts list for
EE SYNTHESIZER 1
SYNTHESIZER 1

Sachnummer
Stock No.

342.5410.01 SA

Blatt
Page

19

Kennzeichen Component No.	Benennung/Beschreibung Designation	Sachnummer Stock No.	enthalten in contained in
R72	RL 0,35W 619 OHM+-1%TK50 RESISTOR DRALORIC SMA0207/619OHM-F-D	RL 083.0478	
R73	RL 0,35W 909 OHM+-1%TK50 RESISTOR DRALORIC SMA0207/909OHM-F-D	RL 083.0584	
R74	RL 0,35W 475 OHM+-1%TK50 RESISTOR DRALORIC SMA0207/475OHM-F-D	RL 083.0390	
R75	RL 0,35W 681 OHM+-1%TK50 RESISTOR DRALORIC SMA0207/681OHM-F-D	RL 083.0490	
R76	RL 0,35W 825 OHM+-1%TK50 RESISTOR DRALORIC SMA0207/825OHM-F-D	RL 082.2502	
R77	RL 0,35W 1,21KOHM+-1%TK50 RESISTOR DRALORIC SMA0207/1,21K-F-D	RL 083.0655	
R80	RL 0,35W 1,50MOHM+-1%TK50 METALFILMRESISTOR RESISTA MK2 1,50MOHM 1% TK50	RL 099.8138	
R81	RL 0,35W 3,32MOHM+-1%TK50 METALFILMRESISTOR RESISTA MK2 3,32MOHM 1% TK50	RL 099.8215	
R82	RL 0,35W 3,32MOHM+-1%TK50 METALFILMRESISTOR RESISTA MK2 3,32MOHM 1% TK50	RL 099.8215	
R83	RL 0,35W 100 OHM+-1%TK50 METALFILM-RESISTOR DRALORIC SMA0207/100/HM-F-D	RL 082.6543	
R84	RL 0,35W 681 OHM+-1%TK50 RESISTOR DRALORIC SMA0207/681OHM-F-D	RL 083.0490	
R86	RL 0,35W 100KOHM+-1%TK50 RESISTOR DRALORIC SMA0207/100K-F-C	RL 082.1764	
BIS/TO R89			
R91	RL 0,35W 100KOHM+-1%TK50 RESISTOR DRALORIC SMA0207/100K-F-C	RL 082.1764	
BIS/TO R97			
R98	RN 9X100KOHM+-2%SIL10 H5 RESISTOR NETWORK BOURNS 4310R-101-104	RN 542.5092	
R99	RN 9X100KOHM+-2%SIL10 H5 RESISTOR NETWORK BOURNS 4310R-101-104	RN 542.5092	
R100	RN 5X22KOHM+-2%SIL10 H5 RESISTOR NETWORK BOURNS 4310R-102-223	RN 504.0168	
R101	RN 5X22KOHM+-2%SIL10 H5 RESISTOR NETWORK BOURNS 4310R-102-223	RN 504.0168	

342.5410.01 SA BL19+

Für diese Unterlage behalten wir
uns alle Rechte vor

**ROHDE & SCHWARZ**

Äl	Datum
56	0287

Schaltteilliste für Parts list for
EE SYNTHESIZER 1 SYNTHESIZER 1

Sachnummer Stock No.
342.5410.01 SA

Blatt Page
20

Kennzeichen Component No.	Benennung/Beschreibung Designation	Sachnummer Stock No.	enthalten in contained in
R102	RN 5X22KOHM+-2% SIL10 H5 RESISTOR NETWORK BOURNS 4310R-102-223	RN 504.0168	
R104	RL 0,21W 18 OHM2% UNGEW. RESISTOR	RL 092.5862	
R105	RESISTA MK1 18OHM 2% UNGEW. RL 0,35W 274 OHM+-1%TK50 RESISTOR	RL 083.0178	
R106	DRALORIC SMA0207/274OHM-F-D RL 0,21W 47 OHM2% UNGEW. RESISTOR	RL 092.5910	
R107	RESISTA MK1 47OHM 2% UNGEW. RL 0,21W 56 OHM2% UNGEW. RESISTOR	RL 092.5927	
R109	RESISTA MK1 56OHM 2% UNGEW. RL 0,35W 56,2 OHM+-1%TK50 RESISTOR	RL 082.9571	
R110	DRALORIC SMA0207/56,2OHM-F-D RL 0,35W 562 OHM+-1%TK50 RESISTOR	RL 083.0461	
R111	DRALORIC SMA0207/562OHM-F-D RL 0,21W 47,5KOHM+-1%TK50 RESISTOR	RL 092.1644	
R112	RESISTA MK1 47K5 1% TK50 RL 0,21W 27,4KOHM+-1%TK50 RESISTOR	RL 092.1615	
R113	RESISTA MK1 27K4 1% TK50 RL 0,21W 1,00KOHM+-1%TK50 RESISTOR	RL 092.1444	
R114	RESISTA MK1 1K00 1% TK50 RL 0,35W 27,40 OHM+-1%TK50 RESISTOR	RL 082.9271	
R115	DRALORIC SMA0207/27,4OHM-F-D RL 0,21W 392 OHM+-1%TK50 RESISTOR	RL 092.1396	
R118	RESISTA MK1 392OHM 1% TK50 RL 0,21W 56,2KOHM+-1%TK50 RESISTOR	RL 092.1650	
R119	RESISTA MK1 56K20 1% TK50 RL 0,21W 27,4KOHM+-1%TK50 RESISTOR	RL 092.1615	
R120	RESISTA MK1 27K4 1% TK50 RL 0,21W 82 OHM2% UNGEW. RESISTOR	RL 092.5940	
R121	RESISTA MK1 82OHM 2% UNGEW. RL 0,35W 274 OHM+-1%TK50 RESISTOR	RL 083.0178	
R122	DRALORIC SMA0207/274OHM-F-D RL 0,21W 270 OHM2% UNGEW. RESISTOR	RL 092.6000	
R123	RESISTA MK1 270OHM 2% UNGEW. RL 0,21W 18 OHM2% UNGEW. RESISTOR	RL 092.5862	
R124	RESISTA MK1 18OHM 2% UNGEW. RL 0,21W 270 OHM2% UNGEW. RESISTOR	RL 092.6000	
	RESISTA MK1 270OHM 2% UNGEW.		

uns alle Rechte vor



ROHDE & SCHWARZ

AI Datum Date
56 0287

Schaltheiliste für
Parts list for
EE SYNTHESIZER 1
SYNTHESIZER 1

Sachnummer
Stock No.

342.5410.01 SA

Blatt
Page

21

Kennzeichen Component No.	Benennung/Beschreibung Designation	Sachnummer Stock No.	enthalten in contained in
R125	RL 0,21W 68 OHM2% UNGEW. RESISTOR RESISTA MK1 68OHM 2% UNGEW.	RL 092.5933	
R126	RL 0,21W 100 OHM2% UNGEW. RESISTOR RESISTA MK1 100OHM 2% UNGEW.	RL 092.5956	
R127	RL 0,21W 68 OHM2% UNGEW. RESISTOR RESISTA MK1 68OHM 2% UNGEW.	RL 092.5933	
R128	RL 0,35W 182 OHM+-1%TK50 RESISTOR DRALORIC SMA0207/182OHM-F-D	RL 083.0010	
R129	RL 0,35W 12,1KOHM+-1%TK50 RESISTOR DRALORIC SMA0207/12,1K-F-D	RL 083.1351	
R130	RL 0,35W 22,1KOHM+-1%TK50 RESISTOR DRALORIC SMA/207/22,1K-F-C	RL 083.1545	
R131	RL 0,35W 1KOHM+-1%TK50 RESISTOR DRALORIC SMA0207/1K-F-C	RL 082.2160	
R132	RL 0,35W 475 OHM+-1%TK50 RESISTOR DRALORIC SMA0207/475OHM-F-D	RL 083.0390	
R133	RL 0,21W 10,0KOHM+-1%TK50 RESISTOR RESISTA MK1 10K0 1% TK50	RL 092.1567	
R134	RL 0,21W 22,1KOHM+-1%TK50 RESISTOR RESISTA MK1 22K1 1% TK50	RL 092.1609	
R135	RL 0,21W 100 OHM2% UNGEW. RESISTOR RESISTA MK1 100OHM 2% UNGEW.	RL 092.5956	
R136	RL 0,35W 1KOHM+-1%TK50 RESISTOR DRALORIC SMA0207/1K-F-C	RL 082.2160	
R137	RL 0,21W 56,2 OHM+-1%TK50 RESISTOR RESISTA MK1 56,2OHM 1% TK50	RL 092.1280	
R138	RL 0,21W 100 OHM+-1%TK50 DEPOS.-CARBON RESISTOR RESISTA MK1 100OHM 1% TK50	RL 092.1321	
R139	RL 0,21W 100 OHM+-1%TK50 DEPOS.-CARBON RESISTOR RESISTA MK1 100OHM 1% TK50	RL 092.1321	
R140	RL 0,21W 100 OHM2% UNGEW. RESISTOR RESISTA MK1 100OHM 2% UNGEW.	RL 092.5956	
R141	RL 0,21W 56 OHM2% UNGEW. RESISTOR RESISTA MK1 56OHM 2% UNGEW.	RL 092.5927	
R142	RL 0,35W 47,5 OHM+-1%TK50 RESISTOR DRALORIC SMA0207/47,5OHM-F-D	RL 082.9507	
R143	RL 0,35W 12,1KOHM+-1%TK50 RESISTOR DRALORIC SMA0207/12,1K-F-D	RL 083.1351	

342.5410.01 SA BL21+

Für diese Unterlage behalten wir
uns alle Rechte vor



ROHDE & SCHWARZ

AI Datum
Date
56 0287

Schaltteilliste für
Parts list for
EE SYNTHESIZER 1
SYNTHESIZER 1

Sachnummer
Stock No.
342.5410.01 SA

Blatt
Page
22

Kennzeichen Component No.	Benennung/Beschreibung Designation	Sachnummer Stock No.	enthalten in contained in
R144	RL 0,35W 22,1KOHM+-1%TK50 RESISTOR DRALORIC SMA/207/22,1K-F-C	RL 083.1545	
R145	RL 0,35W 1KOHM+-1%TK50 RESISTOR DRALORIC SMA0207/1K-F-C	RL 082.2160	
R146	RL 0,35W 75,0 OHM+-1%TK50 RESISTOR DRALORIC SMA0207/750HM-F-D	RL 082.9665	
R147	RL 0,35W 10,0KOHM+-1%TK50 RESISTOR DRALORIC SMA0207/10K-F-D	RL 083.1297	
R148	RL 0,35W 22,1KOHM+-1%TK50 RESISTOR DRALORIC SMA/207/22,1K-F-C	RL 083.1545	
R149	RL 0,21W 100 OHM2% UNGEW. RESISTOR RESISTA MK1 100OHM 2% UNGEW.	RL 092.5956	
R150	RL 0,35W 1KOHM+-1%TK50 RESISTOR DRALORIC SMA0207/1K-F-C	RL 082.2160	
R151	RL 0,21W 330 OHM2% UNGEW. RESISTOR RESISTA MK1 330OHM 2% UNGEW.	RL 092.6017	
R152	RL 0,21W 18 OHM2% UNGEW. RESISTOR RESISTA MK1 18OHM 2% UNGEW.	RL 092.5862	
R154	RL 0,35W 10,0KOHM+-1%TK50 RESISTOR DRALORIC SMA0207/10K-F-D	RL 083.1297	
R156	RL 0,21W 100 KOHM+-1%TK50 RESISTOR RESISTA MK1 100K 10% TK50	RL 092.1680	
R157	RL 0,35W 475 OHM+-1%TK50 RESISTOR DRALORIC SMA0207/475OHM-F-D	RL 083.0390	
R159	RL 0,35W 33,2 OHM+-1%TK50 RESISTOR DRALORIC SMA0207/33,2OHM-F-D	RL 082.9359	
R161	RL 0,21W 5,62KOHM+-1%TK50 RESISTOR RESISTA MK1 5K2 1% TK50	RL 092.1538	
R162	RL 0,21W 33,2KOHM+-1%TK50 RESISTOR RESISTA MK1 33K2 1% TK50	RL 092.1621	
R163	RL 0,21W 10,0KOHM+-1%TK50 RESISTOR RESISTA MK1 10K0 1% TK50	RL 092.1567	
R164	RL 0,21W 100 OHM+-1%TK50 DEPOS.-CARBON RESISTOR RESISTA MK1 100OHM 1% TK50	RL 092.1321	
R165	RL 0,35W 1KOHM+-1%TK50 RESISTOR DRALORIC SMA0207/1K-F-C	RL 082.2160	
R166	RL 0,35W 22,1KOHM+-1%TK50 RESISTOR DRALORIC SMA/207/22,1K-F-C	RL 083.1545	



ROHDE & SCHWARZ

ÄI Datum
Date
56 0287

Schaltteilliste für
Parts list for
EE SYNTHESIZER 1
SYNTHESIZER 1

Sachnummer
Stock No.

342.5410.01 SA

Blatt
Page

73

Kennzeichen Component No.	Benennung/Beschreibung Designation	Sachnummer Stock No.	enthalten in contained in
------------------------------	---------------------------------------	-------------------------	------------------------------

R167	RL 0,35W 681 OHM+-1%TK50 RESISTOR DRALORIC SMA0207/6810HM-F-D	RL 083.0490	
R168	RL 0,35W 100KOHM+-1%TK50 RESISTOR DRALORIC SMA0207/100K-F-C	RL 082.1764	
R169	RL 0,35W 10,0KOHM+-1%TK50 RESISTOR DRALORIC SMA0207/10K-F-D	RL 083.1297	
R170	RL 0,35W 47,5KOHM+-1%TK50 RESISTOR DRALORIC SMA/207/47,5K-F-C	RL 083.1800	
R171	RL 0,35W 5,62KOHM+-1%TK50 RESISTOR DRALORIC SMA0207/5,62K-F-C	RL 082.2190	
R172	RL 0,35W 12,1KOHM+-1%TK50 RESISTOR DRALORIC SMA0207/12,1K-F-D	RL 083.1351	
R173	RL 0,35W 1,82KOHM+-1%TK50 RESISTOR DRALORIC SMA0207/1,82K-F-C	RL 082.2277	
R174	RL 0,35W 475 OHM+-1%TK50 RESISTOR DRALORIC SMA0207/4750HM-F-D	RL 083.0290	
R176	RL 0,35W 1KOHM+-1%TK50 RESISTOR DRALORIC SMA0207/1K-F-C	RL 082.2160	
R177	RL 0,35W 2,21KOHM+-1%TK50 RESISTOR DRALORIC SMA 0207/2,21K-F-C	RL 082.2477	
R178	RL 0,35W 10,0 OHM+-1%TK50 RESISTOR DRALORIC SMA0207/100HM-F-D	RL 082.8852	
R179	RL 0,35W 4,75KOHM+-1%TK50 RESISTOR DRALORIC SMA0207/4,75K-F-D	RL 083.1097	
R180	RL 0,35W 332 OHM+-1%TK50 RESISTOR DRALORIC SMA0207/3320HM-F-D	RL 083.0255	
R181	RL 0,35W 18,2KOHM+-1%TK50 RESISTOR DRALORIC SMA/207/18,2K-F-C	RL 083.1480	
R182	RL 0,35W 221 OHM+-1%TK50 RESISTOR DRALORIC SMA0207/2210HM-F-D	RL 083.0084	
R183	RL 0,35W 2,21KOHM+-1%TK50 RESISTOR DRALORIC SMA 0207/2,21K-F-C	RL 082.2477	
R184	RL 0,35W 3,01KOHM+-1%TK50 RESISTOR DRALORIC SMA0207/3,01K-F-D	RL 083.0961	
R185	RL 0,35W 2,00KOHM+-1%TK50 RESISTOR DRALORIC SMA0207/2,00K-F-D	RL 083.0826	
R186	RL 0,35W 2,43KOHM+-1%TK50 RESISTOR DRALORIC SMA0207/2,43K-F-D	RL 083.0884	

342.5410.01 SA 8L23+

Für diese Unterlage behalten wir
uns alle Rechte vor

Kennzeichen Component No.	Benennung/Beschreibung Designation	Sachnummer Stock No.	enthalten in contained in
R187	RL 0,35W 3,32KOHM+-1%TK50 RESISTOR DRALORIC SMA0207/3,32K-F-D	RL 083.0990	
R188	RL 0,35W 3,92KOHM+-1%TK50 RESISTOR RESISTA MK2	RL 083.1039	
R189	RL 0,35W 1,62KOHM+-1%TK50 RESISTOR DRALORIC SMA0207/1,62K-F-D	RL 083.0755	
R190	RL 0,35W 2,21KOHM+-1%TK50 RESISTOR DRALORIC SMA 0207/2,21K-F-C	RL 082.2477	
R200	RL 0,35W 392 OHM+-1%TK50 RESISTOR DRALORIC SMA0207/392K-F-C	RL 082.2183	
R201	RL 0,35W 392 OHM+-1%TK50 RESISTOR DRALORIC SMA0207/392K-F-C	RL 082.2183	
R202	RL 0,35W 18,2KOHM+-1%TK50 RESISTOR DRALORIC SMA/207/18,2K-F-C	RL 083.1480	
R203	RL 0,35W 4,75KOHM+-1%TK50 RESISTOR DRALORIC SMA0207/4,75K-F-D	RL 083.1097	
R204	RL 0,35W 33,2KOHM+-1%TK50 RESISTOR DRALORIC SMA0207/33,2K-F-C	RL 083.1674	
R205	RL 0,35W 39,2KOHM+-1%TK50 RESISTOR DRALORIC SMA/207/39,2K-F-C	RL 083.1745	
R207	RL 0,21W 1,0KOHM2% UNGEW. RESISTOR RESISTA MK1 1K 2% UNGEW.	RL 092.6075	
R208	RL 0,35W 100KOHM+-1%TK50 RESISTOR DRALORIC SMA0207/100K-F-C	RL 082.1764	
R209	RL 0,35W 4,75KOHM+-1%TK50 RESISTOR DRALORIC SMA0207/4,75K-F-D	RL 083.1097	
R210	RL 0,35W 10,0KOHM+-1%TK50 RESISTOR DRALORIC SMA0207/10K-F-D	RL 083.1297	
R211	RL 0,35W 10,0KOHM+-1%TK50 RESISTOR DRALORIC SMA0207/10K-F-D	RL 083.1297	
R212	RL 0,35W 2,74KOHM+-1%TK50 RESISTOR DRALORIC SMA0207/2,74K-F-D	RL 083.0926	
R213	RL 0,21W 2,21KOHM+-1%TK50 RESISTOR RESISTA MK1 2K21 1% TK50	RL 092.1480	
R214	RL 0,21W 33,2 OHM+-1%TK50 RESISTOR RESISTA MK1 33,2OHM 1% TK50	RL 092.1244	
R215	RL 0,35W 4,75KOHM+-1%TK50 RESISTOR DRALORIC SMA0207/4,75K-F-D	RL 083.1097	

uns alle Rechte vor



ROHDE & SCHWARZ

ÄI Datum
Date
56 0287

Schaltteilliste für
Parts list for
EE SYNTHESIZER 1
SYNTHESIZER 1

Sachnummer
Stock No.

342.5410.01 SA

Blatt
Page

25

Kennzeichen Component No.	Benennung/Beschreibung Designation	Sachnummer Stock No.	enthalten in contained in
R216	RL 0,35W 10,0KOHM+-1%TK50 RESISTOR	RL 083.1297	
R217	DRALORIC SMA0207/10K-F-D RL 0,21W 1,0KOHM2% UNGEW. RESISTOR	RL 092.6075	
R218	RESISTA MK1 1K 2% UNGEW. RL 0,35W 2,74KOHM+-1%TK50 RESISTOR	RL 083.0926	
R219	DRALORIC SMA0207/2,74K-F-D RL 0,21W 2,21KOHM+-1%TK50 RESISTOR	RL 092.1480	
R220	RESISTA MK1 2K21 1% TK50 RL 0,21W 68 OHM2% UNGEW. RESISTOR	RL 092.5933	
R222	RESISTA MK1 68OHM 2% UNGEW. RL 0,21W 47,5 OHM+-1%TK50 RESISTOR	RL 092.1267	
R239	RESISTA MK1 47,5OHM 1% TK50 RL 0,21W 10 OHM2% UNGEW. RESISTOR	RL 092.5833	
R241	RESISTA MK1 10OHM 2% UNGEW. RL 0,35W 2,21KOHM+-1%TK50 RESISTOR	RL 082.2477	
R242	DRALORIC SMA 0207/2,21k-F-C RL 0,35W 10,0KOHM+-1%TK50 RESISTOR	RL 083.1297	
R243	DRALORIC SMA0207/10K-F-D RL 0,35W 1,82KOHM+-1%TK50 RESISTOR	RL 082.2277	
R244	DRALORIC SMA0207/1,82k-F-C RL 0,35W 221 OHM+-1%TK50 RESISTOR	RL 083.0084	
R245	DRALORIC SMA0207/2210HM-F-D RL 0,35W 22,10 OHM+-1%TK50 RESISTOR	RL 082.9188	
R246	DRALORIC SMA0207/22,10HM-F-D RL 0,21W 220 OHM2% UNGEW. RESISTOR	RL 092.5991	
R247	RESISTA MK1 220OHM 2% UNGEW. RL 0,35W 475 OHM+-1%TK50 RESISTOR	RL 083.0390	
R248	DRALORIC SMA0207/475OHM-F-D RL 0,35W 47,5KOHM+-1%TK50 RESISTOR	RL 083.1800	
R249	DRALORIC SMA/207/47,5K-F-C RL 0,35W 33,2KOHM+-1%TK50 RESISTOR	RL 083.1674	
R250	DRALORIC SMA0207/33,2K-F-C RL 0,35W 10,0KOHM+-1%TK50 RESISTOR	RL 083.1297	
R301	DRALORIC SMA0207/10K-F-D RL 0,35W 1KOHM+-1%TK50 RESISTOR	RL 082.2160	
R302	DRALORIC SMA0207/1k-F-C RL 0,35W 1KOHM+-1%TK50 RESISTOR	RL 082.2160	
	DRALORIC SMA0207/1k-F-C		

342.5410.01 SA RL25+

Für diese Unterlage behalten wir
uns alle Rechte vor

**ROHDE & SCHWARZ**Äl Datum
Date
56 0287Schaltteilliste für
Parts list for
EE SYNTHESIZER 1
SYNTHESIZER 1Sachnummer
Stock No.
342.5410.01 SABlatt
Page
26

Kennzeichen Component No.	Benennung/Beschreibung Designation	Sachnummer Stock No.	enthalten in contained in
R303	RL 0,35W 1KOHM+-1%TK50 RESISTOR DRALORIC SMA0207/1K-F-C	RL 082.2160	
R304	RL 0,35W 10,0KOHM+-1%TK50 RESISTOR DRALORIC SMA0207/10K-F-D	RL 083.1297	
BIS/TO			
R309			
R426	RL 0,21W 100 OHM2% UNGEW. RESISTOR RESISTA MK1 100OHM 2% UNGEW.	RL 092.5956	
R427	RL 0,21W 68 OHM2% UNGEW. RESISTOR RESISTA MK1 68OHM 2% UNGEW.	RL 092.5933	
R441	RL 0,21W 150 OHM+-1%TK50 RESISTOR RESISTA MK1 150OHM 1% TK50	RL 092.1344	
R900	RS 0,5W50KOHM+-10%10X10X5 CERMET POTENTIOMETER T BOURNS 3386F-1-503	RS 247.7510	
R903	RS 0,5W1KOHM+-10%10X10X5 CERMET POTENTIOMETER T BOURNS 3386F-1-102	RS 087.7560	
R904	RS 0,5W200 OHM+-10%10X10X CERMET POTENTIOMETER T BOURNS 3386F-1-201	RS 087.7554	
R905	RS 0,5W500 OHM+-10%10X10X CERMET POTENTIOMETER T BOURNS 3386F-1-501	RS 247.7878	
R906	RS 0,5W200 OHM+-10%10X10X CERMET POTENTIOMETER T BOURNS 3386F-1-201	RS 087.7554	
R907	RS 0,5W200 OHM+-10%10X10X CERMET POTENTIOMETER T BOURNS 3386F-1-201	RS 087.7554	
R908	RS 0,5W500 OHM+-10%10X10X CERMET POTENTIOMETER T BOURNS 3386F-1-501	RS 247.7878	
R909	RS 0,5W500 OHM+-10%10X10X CERMET POTENTIOMETER T BOURNS 3386F-1-501	RS 247.7878	
R910	RS 0,5W1KOHM+-10%10X10X5 CERMET POTENTIOMETER T BOURNS 3386F-1-102	RS 087.7560	
R911	RS 0,5W1KOHM+-10%10X10X5 CERMET POTENTIOMETER T BOURNS 3386F-1-102	RS 087.7560	
R912	RS 0,5W500 OHM+-10%10X10X CERMET POTENTIOMETER T BOURNS 3386F-1-501	RS 247.7878	
R913	RS 0,5W1KOHM+-10%10X10X5 CERMET POTENTIOMETER T BOURNS 3386F-1-102	RS 087.7560	
R914	RS 0,5W1KOHM+-10%10X10X5 CERMET POTENTIOMETER T BOURNS 3386F-1-102	RS 087.7560	

**ROHDE & SCHWARZ**ÄI Datum
Date
56 0287Schaltteilliste für
Parts list for
EE SYNTHESIZER 1
SYNTHESIZER 1Sachnummer
Stock No.

342.5410.01 SA

Blatt
Page

27

Kennzeichen Component No.	Benennung/Beschreibung Designation	Sachnummer Stock No.	enthalten in contained in
R915	RS 0,5W2KOHM+-10%10X10X5 CERMET POTENTIOMETER T BOURNS 3386F-1-202	RS 247.7884	
R916	RS 0,5W500 OHM+-10%10X10X CERMET POTENTIOMETER T BOURNS 3386F-1-501	RS 247.7878	
R917	RS 0,5W500 OHM+-10%10X10X CERMET POTENTIOMETER T BOURNS 3386F-1-501	RS 247.7878	
T1	LU UEBERTRAGER TRANSFORMER	303.9499	342.4988
T2	LU UEBERTRAGER TRANSFORMER	303.9499	342.4988
V1	AK BFY90 NPN 15V 25MA TRANSISTOR VALVO BFY90	AK 010.4550	
V2	AE 5082-0112 35V STEPR.DI DIODE HEWLETT 5082-0112	AE 449.7283	
V3	AK 2N2222A NPN 40V 800MA TRANSISTOR VALVO 2N2222A	AK 010.5405	
V4	AK BC337-40 NPN 45V 800MA TRANSISTOR INTERMETAL BC337-40	303.9524	
V5	AD 1N4531 75V 0,15A UDI DIODE UNITRODE 1N4531	AD 082.6514	
BIS/TO			
V10			
V11	AK BFT66 NPN 15V 30MA TRANSISTOR SIEMENS BFT66	AK 252.5728	
V13	AE 5082-2800 SCHOTTKYDI DIODE HEWLETT-P. 5082-2800	AE 012.9066	
V14	AK 2N2222A NPN 40V 800MA TRANSISTOR VALVO 2N2222A	AK 010.5405	
V15	AK 2N2907A PNP 60V 600MA TRANSISTOR VALVO 2N2907A	AK 010.3583	
V16	AK BFR90 NPN 15V 25MA TRANSISTOR VALVO BFR90	236.9109	
V17	AD 1N4531 75V 0,15A UDI DIODE UNITRODE 1N4531	AD 082.6514	
V20	AE BA379 25V PINDI DIODE BA379 SIEMENS BA379	244.7031	
V21	AE BA379 25V PINDI DIODE BA379 SIEMENS BA379	244.7031	

342.5410.01 SA BL27+

Für diese Unterlage behalten wir
uns alle Rechte vor



ROHDE & SCHWARZ

AI Datum Date
56 0287

Schaltteilliste für
Parts list for
EE SYNTHESIZER 1
SYNTHESIZER 1

Sachnummer
Stock No.
342.5410.01 SA

Blatt
Page
22

Kennzeichen Component No.	Benennung/Beschreibung Designation	Sachnummer Stock No.	enthalten in contained in
V22	AE BB405B 11/ 2PF CDI TUNING DIODE VALVO BF405E	AE 596.6839	
V23	AE BB405E 11/ 2PF CDI TUNING DIODE VALVO BF405E	AE 596.6839	
V24	AK BFR96 NPN 15V 75MA TRANSISTOR VALVO BFR96	AK 093.2738	
V25	AK 2N2222A NPN 40V 800MA TRANSISTOR VALVO 2N2222A	AK 010.5405	
V26	AK 2N2907A PNP 60V 600MA TRANSISTOR VALVO 2N2907A	AK 010.3583	
V27	AE BA379 25V PINDI DIODE BA379 SIEMENS BA379	244.7031	
V28	AE BA379 25V PINDI DIODE BA379 SIEMENS BA379	244.7031	
V29	AE BB405B 11/ 2PF CDI TUNING DIODE VALVO BF405B	AE 596.6839	
V30	AE BB405B 11/ 2PF CDI TUNING DIODE VALVO BF405B	AE 596.6839	
V31	AK BFR96 NPN 15V 75MA TRANSISTOR VALVO BFR96	AK 093.2738	
V32	AK 2N2222A NPN 40V 800MA TRANSISTOR VALVO 2N2222A	AK 010.5405	
V33	AK 2N2907A PNP 60V 600MA TRANSISTOR VALVO 2N2907A	AK 010.3583	
V34	AK 2N2907A PNP 60V 600MA TRANSISTOR VALVO 2N2907A	AK 010.3583	
V35	AK PFR90 NPN 15V 25MA TRANSISTOR VALVO BFR90	236.9139	
V50	AK 2N2222A NPN 40V 800MA TRANSISTOR VALVO 2N2222A	AK 010.5405	
V52	AK 2N2907A PNP 60V 600MA TRANSISTOR VALVO 2N2907A	AK 010.3583	
BIS/TO V58 V59	AE 5082-2835 SCHOTTKYDI DIODE HEWLETT-P. 5082-2835	AE 263.8430	
V60	AK 2N2907A PNP 60V 600MA TRANSISTOR VALVO 2N2907A	AK 010.3583	

uns alle Rechte vor

**ROHDE & SCHWARZ**Äl Datum
Date
56 0287Schaltteilliste für
Parts list for
EE SYNTHESIZER 1
SYNTHESIZER 1Sachnummer
Stock No.

342.5410.01 SA

Blatt
Page

20

Kennzeichen Component No.	Benennung/Beschreibung Designation	Sachnummer Stock No.	enthalten in contained in
V61	AK BFR90 NPN 15V 25MA TRANSISTOR VALVO BFR90	236.9139	
V62	AK 2N2907A PNP 60V 600MA TRANSISTOR VALVO 2N2907A	AK 010.3583	
V63	AK BFR90 NPN 15V 25MA TRANSISTOR VALVO BFR90	236.9139	
V64	AK 2N2907A PNP 60V 600MA TRANSISTOR VALVO 2N2907A	AK 010.3583	
V65	AK NE02135 NPN 12V 70MA TRANSISTOR NEC NE02135	300.6147	
V66	AK 2N2907A PNP 60V 600MA TRANSISTOR VALVO 2N2907A	AK 010.3583	
V67	AK BFR90 NPN 15V 25MA TRANSISTOR VALVO BFR90	236.9139	
V68	AK 2N2907A PNP 60V 600MA TRANSISTOR VALVO 2N2907A	AK 010.3583	
V69	AK BFR96 NPN 15V 75MA TRANSISTOR VALVO BFR96	AK 093.2738	
V70	AK 2N2907A PNP 60V 600MA TRANSISTOR VALVO 2N2907A	AK 010.3583	
V71	AK NE02135 NPN 12V 70MA TRANSISTOR NEC NE02135	300.6147	
V72	AE 5082-3379 50V PINDI PINDIODE HEWLETT-P. 5082-3379	AE 397.0049	
V78	AK 2N2222A NPN 40V 800MA TRANSISTOR VALVO 2N2222A	AK 010.5405	
V79	AK RFT66 NPN 15V 30MA TRANSISTOR SIEMENS RFT66	AK 252.5728	
V82	AE 5082-2800 SCHOTTKYDI DIODE HEWLETT-P. 5082-2800	AE 012.9066	
V83	AK 2N2222A NPN 40V 800MA TRANSISTOR VALVO 2N2222A	AK 010.5405	
V84	AK BC337-40 NPN 45V 800MA TRANSISTOR INTERMETAL BC337-40	303.9524	
V85	AK 2N2222A NPN 40V 800MA TRANSISTOR VALVO 2N2222A	AK 010.5405	
V86	AD 1N4531 75V 0,15A UDI DIODE UNITRODE 1N4531	AD 082.6514	

342.5410.01 SA 6L29+

Für diese Unterlage behalten wir
uns alle Rechte vor

**ROHDE & SCHWARZ**

ÄI

Datum
DateSchaltteilliste für
Parts list forEE SYNTHESIZER 1
SYNTHESIZER 1Sachnummer
Stock No.Blatt
Page

56

0287

342.5410.01 SA

30

Kennzeichen Component No.	Benennung/Beschreibung Designation	Sachnummer Stock No.	enthalten in contained in
BIS/TO V91 V92	AK 2N2907A PNP 60V 600MA TRANSISTOR VALVO 2N2907A	AK 010.3583	
BIS/TO V99 V100	AE BB405B 11/ 2PF CDI TUNING DIODE VALVO BB405B	AE 596.6839	
V101	AE BB405B 11/ 2PF CDI TUNING DIODE VALVO BB405B	AE 596.6839	
V102	AK BFR96 NPN 15V 75MA TRANSISTOR VALVO BFR96	AK 093.2738	
V103	AK 2N2222A NPN 40V 800MA TRANSISTOR VALVO 2N2222A	AK 010.5405	
V104	AE BB405B 11/ 2PF CDI TUNING DIODE VALVO BB405B	AE 596.6839	
V105	AE BB405B 11/ 2PF CDI TUNING DIODE VALVO BB405B	AE 596.6839	
V106	AK BFR96 NPN 15V 75MA TRANSISTOR VALVO BFR96	AK 093.2738	
V107	AK 2N2222A NPN 40V 800MA TRANSISTOR VALVO 2N2222A	AK 010.5405	
V108	AD 1N4531 75V 0,15A UDI DIODE UNITRODE 1N4531	AD 082.6514	
BIS/TO V115 V116	AK 2N2222A NPN 40V 800MA TRANSISTOR VALVO 2N2222A	AK 010.5405	
V117	AK 2N2222A NPN 40V 800MA TRANSISTOR VALVO 2N2222A	AK 010.5405	
V120	AD 1N4531 75V 0,15A UDI DIODE UNITRODE 1N4531	AD 082.6514	
V130	AD 1N4531 75V 0,15A UDI DIODE UNITRODE 1N4531	AD 082.6514	
BIS/TO V137 V138	AK 2N2222A NPN 40V 800MA TRANSISTOR VALVO 2N2222A	AK 010.5405	
V139	AK 2N2222A NPN 40V 800MA TRANSISTOR VALVO 2N2222A	AK 010.5405	



ROHDE & SCHWARZ

ÄI Datum
Date
56 0287

Schaltteilliste für
Parts list for
EE SYNTHESIZER 1
SYNTHESIZER 1

Sachnummer
Stock No.
342.5410.01 SA

Blatt
Page
31

Kennzeichen Component No.	Benennung/Beschreibung Designation	Sachnummer Stock No.	enthalten in contained in
V200	AD 1N4531 75V G, 15A UDI DIODE UNITRODE 1N4531	AD 082.6514	
BIS/TO V220			
V230	AK 2N2907A PNP 60V 600MA TRANSISTOR VALVO 2N2907A	AK 010.3583	
V231	AK 2N2907A PNP 60V 600MA TRANSISTOR VALVO 2N2907A	AK 010.3583	
W1	DX HF-KABEL W1 NUR VAR : 02 33 RF CABLE W1	342.5810	
W1	DX HF-KABEL W1 NUR VAR : 12 43	822.7140	342.4904
W2	DX HF-KABEL W2 NUR VAR : 12 43	822.7157	342.4904
W2	DX HF-KABEL W2 NUR VAR : 02 33 RF CABLE W2	342.9696	
X13	VL WIRE-WRAP PIN WIRE-WRAP PIN BERG NR. 75 403-001	VL 088.4507	
X14	VL WIRE-WRAP PIN WIRE-WRAP PIN BERG NR. 75 403-001	VL 088.4507	
X16	VL WIRE-WRAP PIN WIRE-WRAP PIN BERG NR. 75 403-001	VL 088.4507	
X21	FP KURZSCHL.BUCHSE OFFEN SHORTING PLUG BERG 76264-101	FP 342.1895	
X22	FP KURZSCHL.BUCHSE OFFEN SHORTING PLUG BERG 76264-101	FP 342.1895	
X23	FP KURZSCHL.BUCHSE OFFEN SHORTING PLUG BERG 76264-101	FP 342.1895	
X24	FP KURZSCHL.BUCHSE OFFEN SHORTING PLUG BERG 76264-101	FP 342.1895	
X25	FP KURZSCHL.BUCHSE OFFEN SHORTING PLUG BERG 76264-101	FP 342.1895	
BIS/TO X28			
X30	FP KURZSCHL.BUCHSE OFFEN SHORTING PLUG BERG 76264-101	FP 342.1895	
BIS/TO X34			
X151	FP STECKERL.INDIP.64POLIG 64-PIN INSERT PANDUIT 100-064-033/999	FP 084.6470	

342.5410.01 SA 0L31+

Für diese Unterlage behalten wir
uns alle Rechte vor



ROHDE & SCHWARZ

Äi Datum
Date
56 0287

Schaltteilliste für
Parts list for
EE SYNTHESIZER 1
SYNTHESIZER 1

Sachnummer
Stock No.
342.5410.01 SA

Blatt
Page
32

Kennzeichen Component No.	Benennung/Beschreibung Designation	Sachnummer Stock No.	enthalten in contained in
X153	FJ EINBAUWINKELST. SMC NUR VAR : 02 33 ANGLE CONNECTOR RADIALL R 112 669	FJ 249.9684	
X153	FJ EINBAUSTECKER SYST.SMP NUR VAR : 12 43 ANGLE CONNECTOR ROSENBERG R&S-ZCHNG.602.8804	FJ 602.8804	
X155	FJ EINBAUWINKELST. SMC ANGLE CONNECTOR RADIALL R 112 669	FJ 249.9684	
X156	FJ EINBAUWINKELST. SMC NUR VAR : 02 33 ANGLE CONNECTOR RADIALL R 112 669	FJ 249.9684	
X156	FJ EINBAUSTECKER SYST.SMP NUR VAR : 12 43 ANGLE CONNECTOR ROSENBERG R&S-ZCHNG.602.8804	FJ 602.8804	
X1A	VL WIRE-WRAP PIN WIRE-WRAP PIN BERG NR. 75 403-001	VL 088.4507	
X1B	VL WIRE-WRAP PIN WIPE-WRAP PIN BERG NR. 75 403-001	VL 088.4507	
X10A	VL WIRE-WRAP PIN WIRE-WRAP PIN BERG NR. 75 403-001	VL 088.4507	
X10B	VL WIRE-WRAP PIN WIRE-WRAP PIN BERG NR. 75 403-001	VL 088.4507	
X11A	VL WIRE-WRAP PIN WIRE-WRAP PIN BERG NR. 75 403-001	VL 088.4507	
X11B	VL WIRE-WRAP PIN WIRE-WRAP PIN BERG NR. 75 403-001	VL 088.4507	
X12A	VL WIRE-WRAP PIN WIRE-WRAP PIN BERG NR. 75 403-001	VL 088.4507	
X12B	VL WIRE-WRAP PIN WIRE-WRAP PIN BERG NR. 75 403-001	VL 088.4507	
X15A	VL WIPE-WRAP PIN WIRE-WRAP PIN BERG NR. 75 403-001	VL 088.4507	
X15B	VL WIRE-WRAP PIN WIRE-WRAP PIN BERG NR. 75 403-001	VL 088.4507	
X2A	VL WIRE-WRAP PIN WIRE-WRAP PIN BERG NR. 75 403-001	VL 088.4507	
X2B	VL WIRE-WRAP PIN WIRE-WRAP PIN BERG NR. 75 403-001	VL 088.4507	

uns alle Rechte vor



ROHDE & SCHWARZ

Äl Datum
Date
56 0287

Schalteilliste für
Parts list for
EE SYNTHESIZER 1
SYNTHESIZER 1

Sachnummer
Stock No.

342.5410.01 SA

Blatt
Page

33

Kennzeichen
Component No.

Benennung/Beschreibung
Designation

Sachnummer
Stock No.

enthalten in
contained in

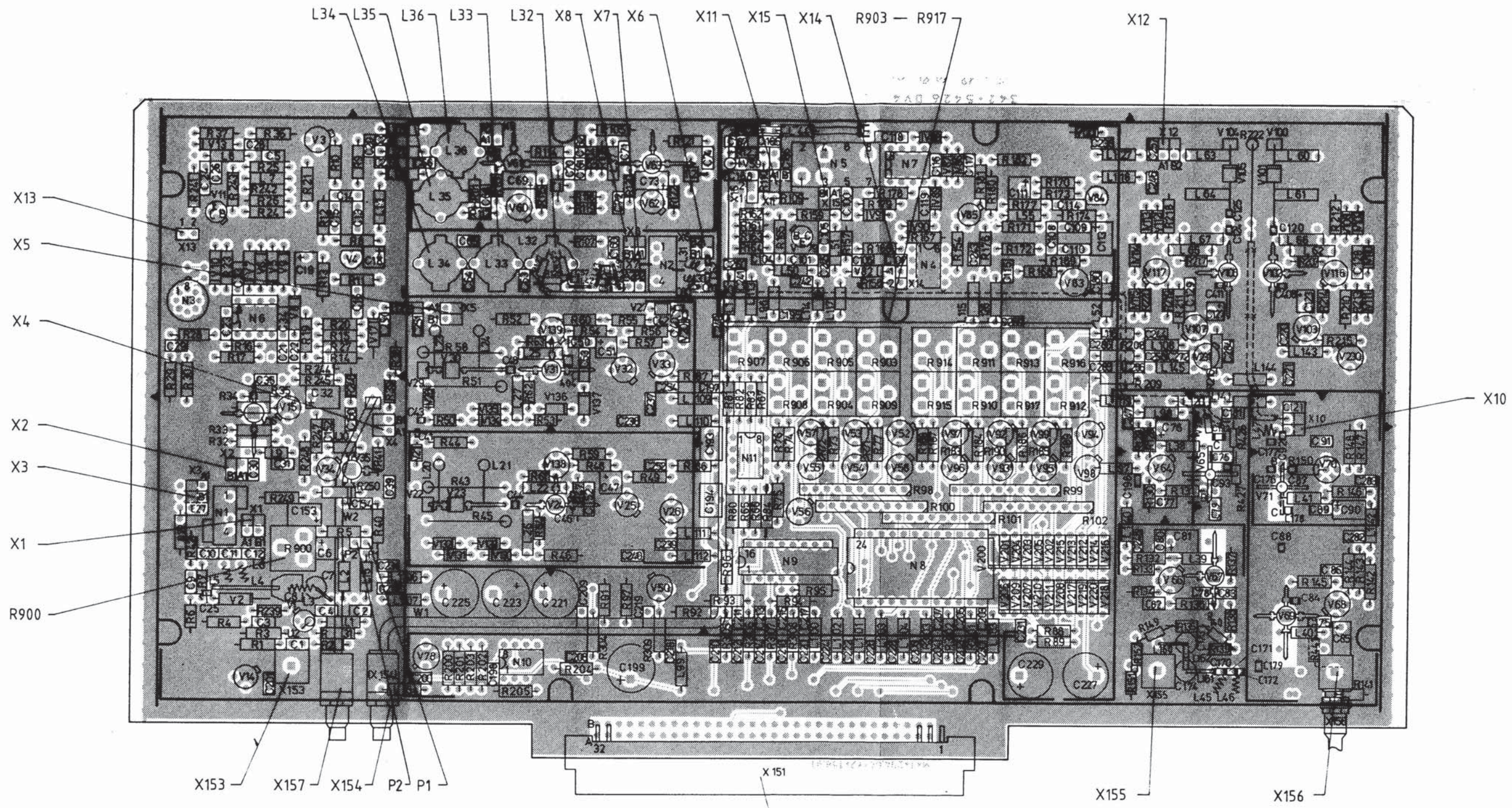
X3A	VL WIRE-WRAP PIN WIRE-WRAP PIN BERG NR. 75 403-001	VL 088.4507	
X3C	VL WIRE-WRAP PIN WIRE-WRAP PIN BERG NR. 75 403-001	VL 088.4507	
X4A	VL WIRE-WRAP PIN WIRE-WRAP PIN BERG NR. 75 403-001	VL 088.4507	
X4B	VL WIRE-WRAP PIN WIRE-WRAP PIN BERG NR. 75 403-001	VL 088.4507	
X5A	VL WIRE-WRAP PIN WIRE-WRAP PIN BERG NR. 75 403-001	VL 088.4507	
X5B	VL WIRE-WRAP PIN WIRE-WRAP PIN BERG NR. 75 403-001	VL 088.4507	
X6A	VL WIRE-WRAP PIN WIRE-WRAP PIN BERG NR. 75 403-001	VL 088.4507	
X6B	VL WIRE-WRAP PIN WIRE-WRAP PIN BERG NR. 75 403-001	VL 088.4507	
X7A	VL WIRE-WRAP PIN WIRE-WRAP PIN BERG NR. 75 403-001	VL 088.4507	
X7B	VL WIRE-WRAP PIN WIRE-WRAP PIN BERG NR. 75 403-001	VL 088.4507	
X8A	VL WIRE-WRAP PIN WIRE-WRAP PIN BERG NR. 75 403-001	VL 088.4507	
X8B	VL WIRE-WRAP PIN WIRE-WRAP PIN BERG NR. 75 403-001	VL 088.4507	
X9A	VL WIRE-WRAP PIN WIRE-WRAP PIN BERG NR. 75 403-001	VL 088.4507	
X9B	VL WIRE-WRAP PIN WIRE-WRAP PIN BERG NR. 75 403-001	VL 088.4507	

- ENDE -

342.5410.01 SA BL33-

Für diese Unterlage behalten wir
uns alle Rechte vor

A
B
C
D
E

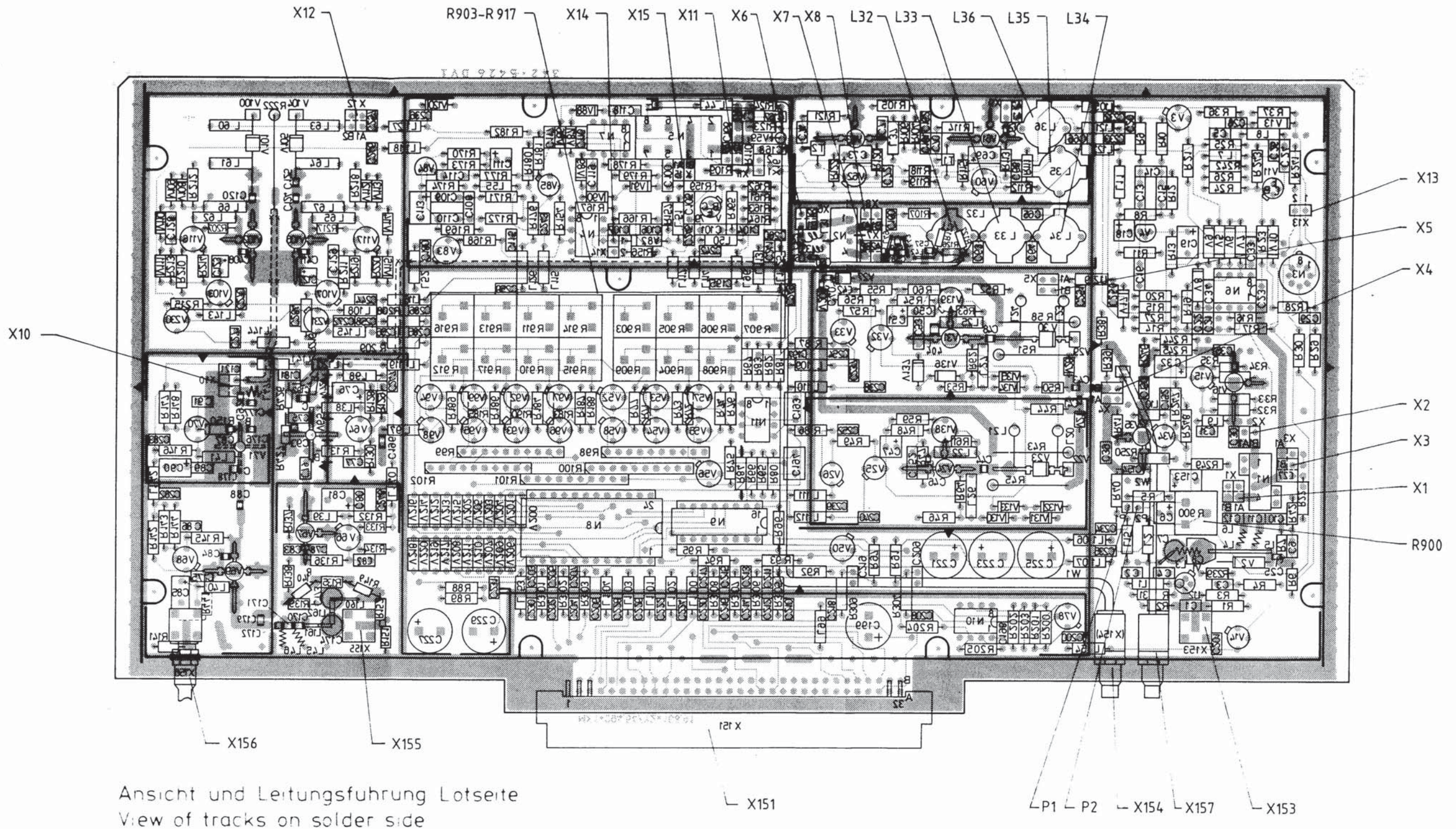


Ansicht und Leitungsführung Bauteilseite
View of tracks on component side

Für diese Unterlage behalten wir uns alle Rechte vor

H	10.84	NL	Maße ohne Toleranzangabe	Maßstab 1 : 1 Maßzeug Werkstoff	
J	31 518	11.84			NL
K	31518	02.85			NL
1GMF			Tab	Name	Benennung Synthesizer 1
Bezt			10.84	NL	
Sepr					
Norm					
			Bestell-Nr 342.5410		Blatt-Nr 2
Änderungs-Messung Tag Name ESV			342.4020V		342.4020

Für diese Unterlage behalten wir uns alle Rechte vor.



Ansicht und Leitungsführung Lotseite
View of tracks on solder side

H	10.84	NL	Maße ohne Toleranzangabe	Maßstab 1 : 1	
J	31 518	11.84			NL
K	31518	02.85			NL
			1GMF Tag Name	Bezeichnung	
			Beord. 10.84 NL	Synthesizer 1	
				Z	
			ROHDE & SCHWARZ	342.5410	
			ESV	342.4020V 342.4020	
				Blatt Nr. 3	